

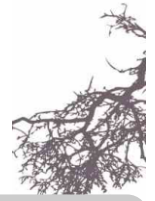


12th SYMPOSIUM

Thursday, 30 November 2017
LE HAVRE

End-of-life wood

New resurgence for energy!



On the **afternoon of Wednesday, 29 November**, join the **free visits** of wood-energy installations (see page 4).

With an estimated annual flux of more than **7 million tons (Mt)** in France, the mobilisation of end-of-life woods is at the centre of several issues: **to reduce** the volumes for the **landfilling** (3Mt), **to avoid the destabilisation** of the existing **economic sectors** (manufacture of wood panels for nearly 2Mt), and to **optimise the energy recovery** (approximately 1.5 Mt). The remaining part is exported to Belgium and Italy (approximately 1Mt) and, according to opportunities, to power plants in Northern Europe.

How can we prevent the important loss of added value for the producing regions? How can we better exploit this resource within our borders? The production of heat constitutes a promising outlet.

The emergence of such a solution is however determined by three fundamental elements: an **applicable and suitable regulatory framework**, the establishment of **new outlets** and a **sector economically attractive** for the owners of these wastes.

OBJECTIVES

In order to identify the challenges to be met to mobilise the used wood to energy purposes, the **CIBE's experts and their partners will make an assessment of the situation, including the context of the neighbouring European countries (Belgium, United-Kingdom...): characterisation, classification, regulation, flows and uses.**

Based on experience feedback, this symposium, which is dedicated to the existing and potential professionals (collectivities, industrials, institutions...), aims:

- To define the current context of **mobilisation** of wood waste for energy recovery.
- To display ways of **optimisation** which will be implemented in the near future.
- To disseminate to the sector existing **solutions and good practices** to reach the common objectives.

With the intervention of :

ADEME, Biomasse Normandie, CEDEN, ECO-MOBILIER, ENORIS/Engie Réseaux, FCBA, FEDENE, FEDEREC Palettes et bois, INDDIGO, LINEX Panneaux, MAITRÉA, SRBTP, STEAG New Energies GmbH, SOPREMA, Suez Recyclage et Valorisation, VICAT and Wood Recyclers Association (WRA)



CIBE - Comité Interprofessionnel du Bois-Energie

www.cibe.fr

3 rue Basfroi - 75011 PARIS - 09.53.58.92.65 - contact@cibe.fr

The inter-professional committee of Wood-Energy (CIBE) was created in 2006.

CIBE coordinates and supports the players of **collective and industrial wood-heating systems** in order to: professionalise the practices, introduce the standard practices, train the professionals and promote boilers of high and average power to public and private decision-makers. CIBE gathers **150 companies, project owners** (public and private) and **professionals** from wood and energy sectors.

This committee provided for instance the simplified classification of biofuel and the technical notes on emissions reduction, fumes condensation, ashes valorisation, funding paths, and economical simulations. It also played a role in the consolidation of CEEB indexes...

CIBE also organises technical sessions, training sessions, conferences and has a website with documentary database and quarterly newsletter.

With the participation of :



With the support :



This project has received funding from the European Union's H2020 research and innovation programme under grant agreement no 727958.



Crédit photo : CEDEN, INDDIGO - Version du 21 novembre 2017

8:30 Reception and opening of the “exhibition” area

9:00 Welcome by the President of the Normandy Region

Introduction by the President of CIBE, Bruno de MONCLIN

Context on the end-of-life wood and the circular economy, presented by ADEME



9:30 Legislations, regulations and classifications

End-of-life woods are predominantly solid wood or reconstituted wood panel products (particleboard), which are produced by many economic players and activity sectors: households, companies, business, building... They can be constituted of only virgin material (clean wood), may have received different types of chemical treatment (preservative, glue, paint, lacquer...) or can be associated, more or less strongly, with other materials (coating, plastic, metal, glass...).

They are concerned by policies and legislations related to waste and their future as well as potential outlets and their obligations. The EU regulatory framework provides a common basis for Member States, including for energy purposes, and sometimes specific texts to end-of-life woods enrich the large collection of legislative and national regulatory frameworks.

However, approaches are rather heterogeneous according to the countries. Indeed, the classifications of end-of-life woods (definitions, categories, content limits of contaminants...), have mostly been suggested by professionals. Thus, they varied according to outlets proposed in each country and do not have a regulatory status, except in Germany.

What changes (for instance, as regards the harmonisation of classifications) would facilitate the development of end-of-life wood recovery?

Oral presentations

End-of-life wood : what is it about?

Dominique BOULDAY

(Mission director, CEDEN)

End-of-life wood in new ADEME reference documents

Gaëtan REMOND

(Associate director, INDDIGO)

COGEBIO/SOPREMA: origin of the project

Olivier WEYMANN

(Plant Manager, SOPREMA)

Open discussion, led by

Clarisse FISCHER

(Delegate General, CIBE)

10:50 Break at the “exhibition” area

Oral presentations

Introduction: French context coming from the strategy committee of sector

Gérard DEROUBAIX

(Director of Pôle environnement, Economie et Bio-ressources, FCBA)

Development of the use of end-of-life wood in United-Kingdom

Andy HILL

(Market Development Director, Wood Recyclers Association (WRA))

Regulation context in Germany

Annick GERNE

(Project engineer, STEAG New Energies GmbH)

11:30 Resources and uses

End-of-life woods are recovered variously according to sectors: direct drop off by the producer in collecting centres, door-to-door collection service for households, provision of containers for the companies or on construction sites... Woods are then conditioned on platforms / sorting centre, or directly on the user site.

The recycling in industry of particleboard and the production of energy are the two main modes of valorisation of end-of-life woods, as a substitute for forest-origin woods. A co-existence is needed taking in account cascade use, even if the demands are different: energy regulations set low thresholds for metals, chlorine,... in order to limit the impact on atmospheric emissions for instance, whereas the particleboard industry emphasises the physical quality by imposing more solid wood in the wood supplies and by avoiding, as far as possible, the presence of old fibreboards.

Where should we place the border to satisfy the players of each valorisation sectors, while maintaining quality of resources and mix produced?



13:00 Lunch and exhibition

15:00 Operating constraints

Oral presentations

Synthesis of the BIOREG project's visits and European benchmark

Dominique PLUMAIL
(Manager, CEDEN)

Feedback on energy recovery and wood waste in cement works

Breffni BOLZE
(Department of fuel and substitute materials, VICAT)

Round table

Completed by :

- Lionel BEQUET (Project manager, Energy transition, MAITRÉA)
- Anne EGLOFF (Director of the project BIOSYNERGY LE HAVRE, SUEZ Recyclage et Valorisation)
- Ziad NEMR (Department responsable, ENORIS/Engie réseaux)

Exogeneous compounds including trace metals, chlorine,... cause the formation of pollutants that it is appropriate to limit in the atmospheric emissions.

For that purpose, it is essential, on one hand, to use a properly prepared biofuel (for instance, by the extraction of the fine fraction) and on the other hand to have an efficient flue gas treatment enable to capture a large part of heavy metals, NOx, dioxins and furans and additional treatment equipment to destroy or to trap the residual portion of these pollutants (bag filter, electrostatic precipitator, scrubbers, SNCR...).

Energy recovery of end-of-life wood cannot be done under any conditions. What are the good practices and the possible ways of optimisation in terms of biofuel preparation, operating of facilities and environmental efficiency?



16:00 Prospective

Round table

Led by :

Mathieu FLEURY (Director, Biomasse Normandie)

Consisting of :

- Fabien CAMBON (Technical director, ECO-MOBILIER)
- Raphaël GAS (Director-General of Serfim Recyclage, SRBTP)
- Thierry GENOUD (Purchasing manager of SOVEN, FEDENE)
- Pascal LEON (President, FEDEREC Palettes et bois)
- Laurent DE SUTTER (Leader, LINEX Panneaux)

16:45 Conclusion

17:00 End of the 2017 symposium

18:00 Closure of the exhibition

Equipment and services related to the energy recovery from end-of-life wood will be presented at the "exhibition" area during breaks.





12th SYMPOSIUM

Thursday, 30 November 2017
LE HAVRE

End-of-life wood

New resurgence for energy!



On the afternoon of Wednesday, 29 November – Visits of the wood-energy installations
Biomass installation of UPM in Grand-Couronne
(21 MW co-generation plant using end-of-life wood, putting into service in 2007)
&
Production platform of wood wastes VEOLIA in Oissel
For more information, see the website of CIBE www.cibe.fr

PROCEDURE FOR REGISTRATION

- 1 - **Registration before Friday, 24 November 2017** (after this date, contact us):
 - Either online via the link <https://goo.gl/forms/Jpnj4uiDw7SvqQDk2>
 - or with the registration form below
- 2 - The symposium will take place on Thursday 30 November from 8:30 in LE HAVRE. On receipt of your registration, you will receive a **confirmation email from us with the corresponding invoice and the reception arrangements.**
- 3 - **If you did not receive anything within 72 hours before the beginning of the symposium**, please give us a call to check that your registration has been taken into account.
- 4 - **Cancellations done by email before 27 October** allow to be fully reimbursed. After that date, and in case of absence the day of the symposium, the full fees are required. However, **substitutions will be accepted**: thank you in advance to inform us in writing.

NB : The organisers reserve the right to modify the program or oral presentations, in appropriate circumstances. **The access details will be displayed during the registration confirmation.**



REGISTRATION FORM by mail

To send before 24 November to the following address: CIBE – 3 rue Basfroi – 75011 PARIS

Payment: by bank cheque made payable to CIBE or by bank transfer (CIBE bank account details : Crédit Agricole Ile de France / Domiciliation Paris Gare de Lyon / RIB n° 18206 00211 60202184166 - 26 / IBAN : FR76 1820 6002 1160 2021 8416 626 / BIC : AGRIFRPP882)

SURNAME _____ Name _____
 Company _____ Phone number _____
 Address _____

 Billing address (if different) _____

 Email (compulsory to receive the confirmation email) _____

I will participate to the visits organised on the afternoon of Wednesday, 29 November: YES /NO

Rates :

- You can benefit from reduced rates by registering before Friday, 27 October 2017:
- 200 € excluding all taxes for members of CIBE, then 250 € excluding all taxes after Friday, 27 October.
 - 330 € excluding all taxes for non-members, then 370 € excluding all taxes after Friday, 27 October.

Special offer for the members of CIBE:

4 grouped registrations for the price of 3, i.e. 187.50 € excluding all taxes per person instead of 250 € excluding all taxes

CIBE - Comité Interprofessionnel du Bois-Energie
3 rue Basfroi - 75011 PARIS - 09.53.58.92.65 - contact@cibe.fr

www.cibe.fr